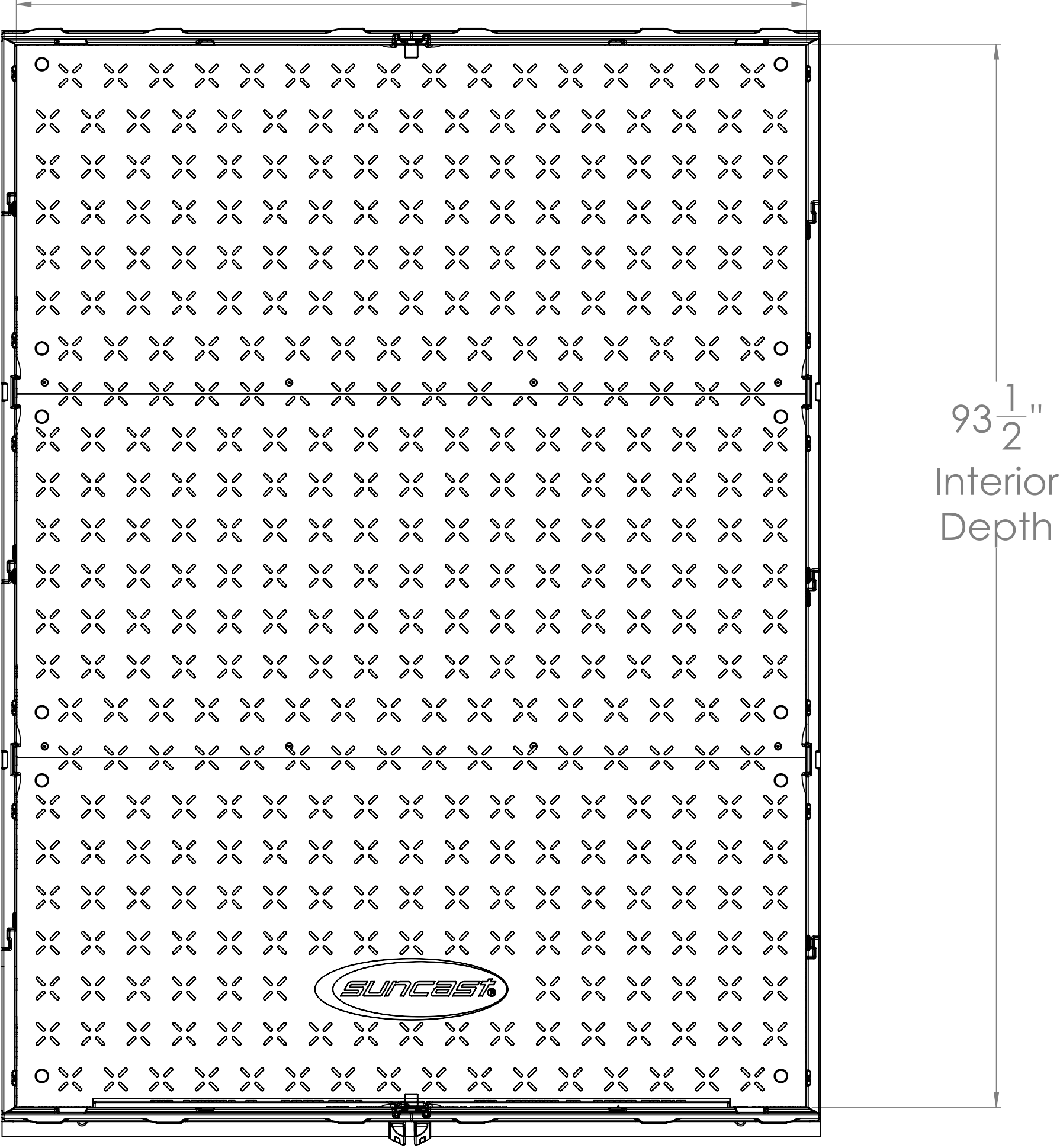


BMS 6800 Top

69½" Interior Width

BMS 6800 Top



D

C

B

A

SCALE 1:20

72"

1. Dimensions on 2-D drawing are for reference only. 3-D solid model should be used for exact dimensions except where specifically noted on 2-D drawing.

BOTTOM VIEW

SIDE VIEW

REV	BY	DATE	DESCRIPTION	
			REVISIONS	
			LTR OPERATIONAL DRAWING MKM 6000-8000-0000-0000	
			DRAWN BY	CHECKED BY
			MKM	10/20/70
			UNLESS OTHERWISE SPECIFIED	
			DIMENSIONS ARE IN INCHES	
PART #			TOLERANCES ARE:	
BMS 6 x 8			FRACTIONS	DECIMALS ANGLES
			±1/64"	.XX(.01 .XX)±"
				.XXXX ±.005
			A	BMS 6 x 8 Platform
			SHEET 1 OF 1	NOT SCALE DRAWING

8 7 6 5 4 3 2 1

THE INFORMATION CONTAINED IN THIS DRAWING IS THE SOLE PROPERTY OF SUNCAST CORPORATION. ANY REPRODUCTION IN PART OR WHOLE WITHOUT THE WRITTEN PERMISSION OF SUNCAST CORPORATION IS PROHIBITED.

ITEM NO.	PART NUMBER	QTY.
1	72 x 97.3 x .75 Platform Base	1
A	2 x 6 x 10.25	8
B	2 x 6 x 68.5	8
C	2 x 6 x 97.3	2

2 X 6 Lengths:

A
10 ¹/₄"

8 Pcs. (2" x 6" x 10.25") is recommended to support lag screws/securing fasteners)

B
68 ¹/₂"
8 Pcs.

C
97 ¹/₄"
2 Pcs.

NOTES:

1. Dimensions on 2-D drawing are for reference only. 3-D solid model should be used for exact dimensions except where specifically noted on 2-D drawing.

2. SCALE 1:20

REV	BY	DATE	DESCRIPTION

SUNCAST CORPORATION
701 North Kirk Road
Batavia, IL 60510 USA

BMS 6 x 8 Platform

PART #	BMS 6 x 8
TOLERANCES ARE:	FRACTIONS DECIMALS ANGLES
	+1/64" .XX-01 .XXe1 °
	.XXX ±.005

THE INFORMATION CONTAINED IN THIS DRAWING IS THE SOLE PROPERTY OF SUNCAST CORPORATION. ANY REPRODUCTION IN PART OR WHOLE WITHOUT THE WRITTEN PERMISSION OF SUNCAST CORPORATION IS PROHIBITED.

ITEM NO.	PART NUMBER	QTY.
1	72 x 97.3 x .75 Platform Base	1
A	2 x 6 x 10.25	8
B	2 x 6 x 68.5	8
C	2 x 6 x 97.3	2

2 X 6 Lengths:

8 Pcs. (2" x 6" x 10.25") is recommended to support lag screws/securing fasteners)

NOTES:

1. Dimensions on 2-D drawing are for reference only. 3-D solid model should be used for exact dimensions except where specifically noted on 2-D drawing.

2. SCALE 1:20

REV	BY	DATE	DESCRIPTION
<small>FOR GENERAL PURPOSES UNLESS OTHERWISE SPECIFIED DIMENSIONS ARE IN INCHES TOLERANCES ARE: FRACTIONS DECIMALS ANGLES</small>			<small>REVISIONS</small> 10/20/10 <small>UNLESS OTHERWISE SPECIFIED DIMENSIONS ARE IN INCHES TOLERANCES ARE: FRACTIONS DECIMALS ANGLES</small>
PART # BMS 6 x 8			BMS 6 x 8 Platform <small>XXX ± .005</small>

SunCast Corporation
 701 North Kirk Road
 Batavia, IL 60510 US

THE INFORMATION CONTAINED IN THIS DRAWING IS THE SOLE PROPERTY OF SUNCAST CORPORATION. ANY REPRODUCTION IN PART OR WHOLE WITHOUT THE WRITTEN PERMISSION OF SUNCAST CORPORATION IS PROHIBITED.

2 X 6 Lengths:

8 Pcs. (2" x 6" x 10.25") is recommended to support lag screws/securing fasteners)

10 $\frac{1}{4}$ "

68 $\frac{1}{2}$ " 8 Pcs.

97 $\frac{1}{4}$ " 2 Pcs.

ITEM NO.	PART NUMBER	QTY.
1	72 x 97.3 x .75 Platform Base	1
A	2 x 6 x 10.25	8
B	2 x 6 x 68.5	8
C	2 x 6 x 97.3	2

NOTES:

1. Dimensions on 2-D drawing are for reference only. 3-D solid model should be used for exact dimensions except where specifically noted on 2-D drawing.

2. SCALE 1:20

REV. BY DATE DESCRIPTION REVISIONS

10/20/10

MKM

10/20/10

UNLESS OTHERWISE SPECIFIED DIMENSIONS ARE IN INCHES TOLERANCES ARE: FRACTIONS DECIMALS ANGLES

±.005 ±.005 ±.005

SUNCAST CORPORATION

701 North Kirk Road

Batavia, IL 60510 US

BMS 6 x 8 Platform

BMS 6 x 8 Platform

DO NOT SCALE DRAWING

8 7 6 5 4 3 2 1

THE INFORMATION CONTAINED IN THIS DRAWING IS THE SOLE PROPERTY OF SUNCAST CORPORATION. ANY REPRODUCTION IN PART OR WHOLE WITHOUT THE WRITTEN PERMISSION OF SUNCAST CORPORATION IS PROHIBITED.

ITEM NO.	PART NUMBER	QTY.
1	72 x 97.3 x .75 Platform Base	1
A	2 x 6 x 10.25	8
B	2 x 6 x 68.5	8
C	2 x 6 x 97.3	2

2 X 6 Lengths:

10 $\frac{1}{4}$ "

68 $\frac{1}{2}$ "

97 $\frac{1}{4}$ "

8 Pcs. (2" x 6" x 10.25") is recommended to support lag screws/securing fasteners)

8 Pcs.

2 Pcs.

8 7 6 5 4 3 2 1

NOTES:

1. Dimensions on 2-D drawing are for reference only. 3-D solid model should be used for exact dimensions except where specifically noted on 2-D drawing.

2. SCALE 1:20

REV	BY	DATE	DESCRIPTION

DESIGNED BY: MKM

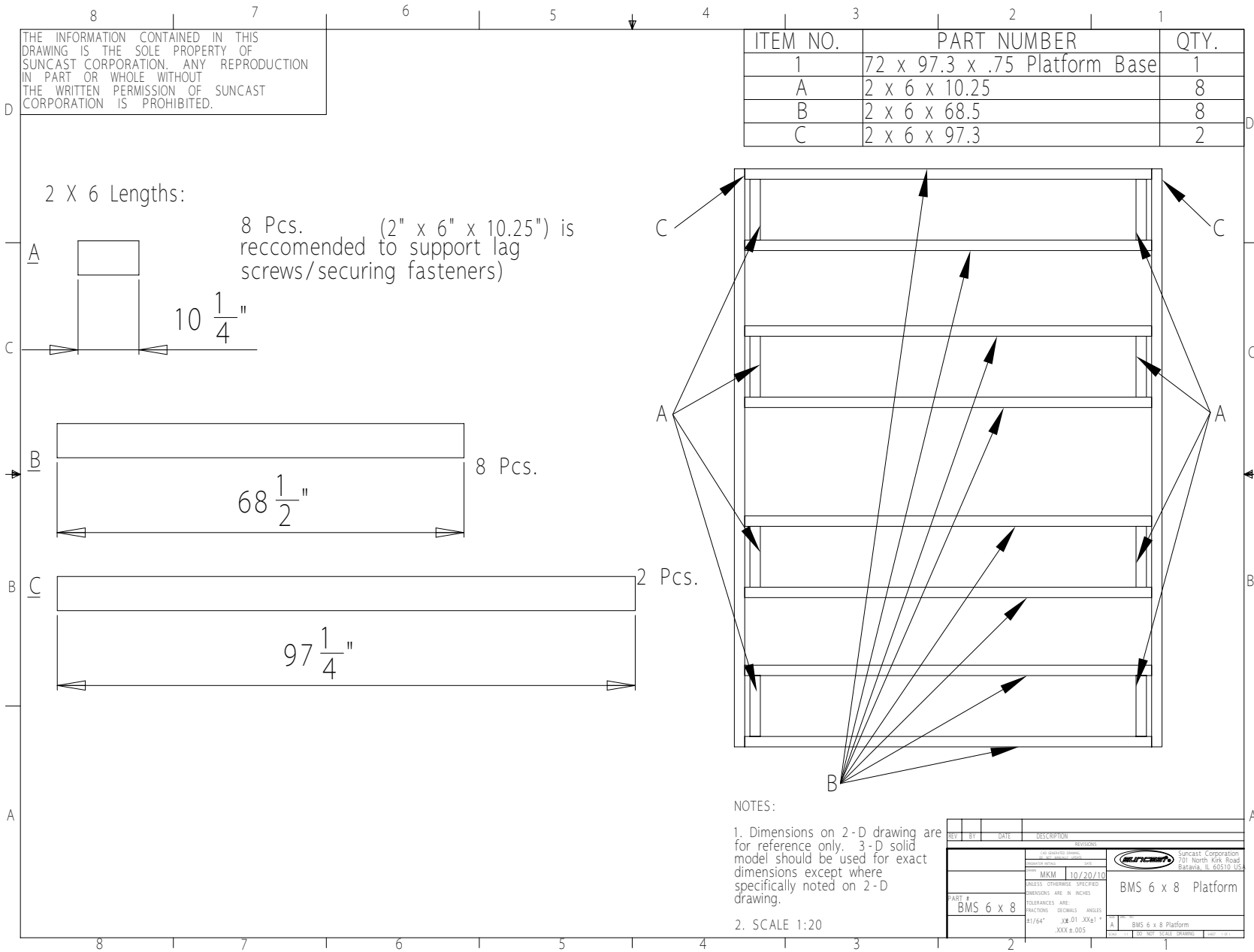
DRAWN BY: JKL

DATE: 10/20/10

SUNCAST CORPORATION
701 North Kirk Road
Batavia, IL 60510 USA

BMS 6 x 8 Platform

PART # BMS 6 x 8	TOLERANCES ARE: FRACTIONS DECIMALS ANGLES ±1/64" ±.01 ±XXel °
<div style="display: flex; justify-content: space-between;"><div>A</div><div>BMS 6 x 8 Platform</div><div>X</div></div>	



THE INFORMATION CONTAINED IN THIS DRAWING IS THE SOLE PROPERTY OF SUNCAST CORPORATION. ANY REPRODUCTION IN PART OR WHOLE WITHOUT THE WRITTEN PERMISSION OF SUNCAST CORPORATION IS PROHIBITED.

2 X 6 Lengths:

8 Pcs. (2" x 6" x 10.25") is recommended to support lag screws/securing fasteners)

10 $\frac{1}{4}$ "

68 $\frac{1}{2}$ " 8 Pcs.

97 $\frac{1}{4}$ " 2 Pcs.

ITEM NO.	PART NUMBER	QTY.
1	72 x 97.3 x .75 Platform Base	1
A	2 x 6 x 10.25	8
B	2 x 6 x 68.5	8
C	2 x 6 x 97.3	2

NOTES:

1. Dimensions on 2-D drawing are for reference only. 3-D solid model should be used for exact dimensions except where specifically noted on 2-D drawing.

2. SCALE 1:20

REV. BY DATE DESCRIPTION REVISIONS

10/20/10

MKM

10/20/10

UNLESS OTHERWISE SPECIFIED DIMENSIONS ARE IN INCHES TOLERANCES ARE: FRACTIONS DECIMALS ANGLES

±.005 ±.005 ±.005

SUNCAST CORPORATION

701 North Kirk Road

Batavia, IL 60510 US

BMS 6 x 8 Platform

BMS 6 x 8 Platform

DO NOT SCALE DRAWING

THE INFORMATION CONTAINED IN THIS DRAWING IS THE SOLE PROPERTY OF SUNCAST CORPORATION. ANY REPRODUCTION IN PART OR WHOLE WITHOUT THE WRITTEN PERMISSION OF SUNCAST CORPORATION IS PROHIBITED.

2 X 6 Lengths:

8 Pcs. (2" x 6" x 10.25") is recommended to support lag screws/securing fasteners)

10 $\frac{1}{4}$ "

68 $\frac{1}{2}$ " 8 Pcs.

97 $\frac{1}{4}$ " 2 Pcs.

ITEM NO.	PART NUMBER	QTY.
1	72 x 97.3 x .75 Platform Base	1
A	2 x 6 x 10.25	8
B	2 x 6 x 68.5	8
C	2 x 6 x 97.3	2

NOTES:

1. Dimensions on 2-D drawing are for reference only. 3-D solid model should be used for exact dimensions except where specifically noted on 2-D drawing.

2. SCALE 1:20

REV. BY DATE DESCRIPTION REVISIONS

10/20/10

MKM

10/20/10

UNLESS OTHERWISE SPECIFIED DIMENSIONS ARE IN INCHES TOLERANCES ARE: FRACTIONS DECIMALS ANGLES

±.005 ±.005 ±.005

SUNCAST CORPORATION

701 North Kirk Road

Batavia, IL 60510 US

BMS 6 x 8 Platform

BMS 6 x 8 Platform

DO NOT SCALE DRAWING

THE INFORMATION CONTAINED IN THIS DRAWING IS THE SOLE PROPERTY OF SUNCAST CORPORATION. ANY REPRODUCTION IN PART OR WHOLE WITHOUT THE WRITTEN PERMISSION OF SUNCAST CORPORATION IS PROHIBITED.

2 X 6 Lengths:

8 Pcs. (2" x 6" x 10.25") is recommended to support lag screws/securing fasteners)

10 $\frac{1}{4}$ "

68 $\frac{1}{2}$ " 8 Pcs.

97 $\frac{1}{4}$ " 2 Pcs.

ITEM NO.	PART NUMBER	QTY.
1	72 x 97.3 x .75 Platform Base	1
A	2 x 6 x 10.25	8
B	2 x 6 x 68.5	8
C	2 x 6 x 97.3	2

NOTES:

1. Dimensions on 2-D drawing are for reference only. 3-D solid model should be used for exact dimensions except where specifically noted on 2-D drawing.

2. SCALE 1:20

REV. BY DATE DESCRIPTION REVISIONS

10/20/10

MKM

10/20/10

UNLESS OTHERWISE SPECIFIED DIMENSIONS ARE IN INCHES TOLERANCES ARE: FRACTIONS DECIMALS ANGLES

±.005 ±.005 ±.005

SUNCAST CORPORATION 701 North Kirk Road Batavia, IL 60510 US

BMS 6 x 8 Platform

BMS 6 x 8 Platform

DO NOT SCALE DRAWING

THE INFORMATION CONTAINED IN THIS DRAWING IS THE SOLE PROPERTY OF SUNCAST CORPORATION. ANY REPRODUCTION IN PART OR WHOLE WITHOUT THE WRITTEN PERMISSION OF SUNCAST CORPORATION IS PROHIBITED.

2 X 6 Lengths:

8 Pcs. (2" x 6" x 10.25") is recommended to support lag screws/securing fasteners)

10 $\frac{1}{4}$ "

68 $\frac{1}{2}$ " 8 Pcs.

97 $\frac{1}{4}$ " 2 Pcs.

ITEM NO.	PART NUMBER	QTY.
1	72 x 97.3 x .75 Platform Base	1
A	2 x 6 x 10.25	8
B	2 x 6 x 68.5	8
C	2 x 6 x 97.3	2

NOTES:

1. Dimensions on 2-D drawing are for reference only. 3-D solid model should be used for exact dimensions except where specifically noted on 2-D drawing.

2. SCALE 1:20

REV. BY DATE DESCRIPTION REVISIONS

10/20/10

MKM

10/20/10

UNLESS OTHERWISE SPECIFIED DIMENSIONS ARE IN INCHES TOLERANCES ARE: FRACTIONS DECIMALS ANGLES

±.005 ±.005 ±.005

SUNCAST CORPORATION

701 North Kirk Road

Batavia, IL 60510 US

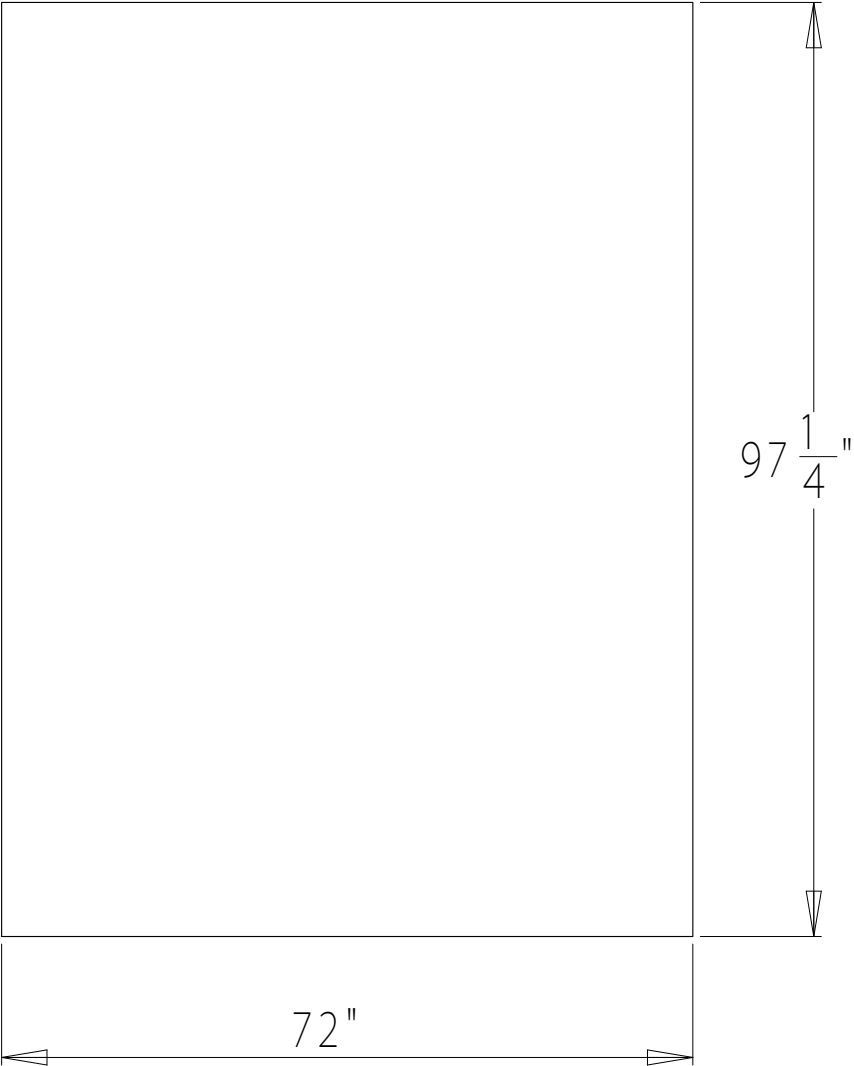
BMS 6 x 8 Platform

BMS 6 x 8 Platform


DO NOT SCALE DRAWING

1
2
3
4

Concrete Slab



D
C
B
A

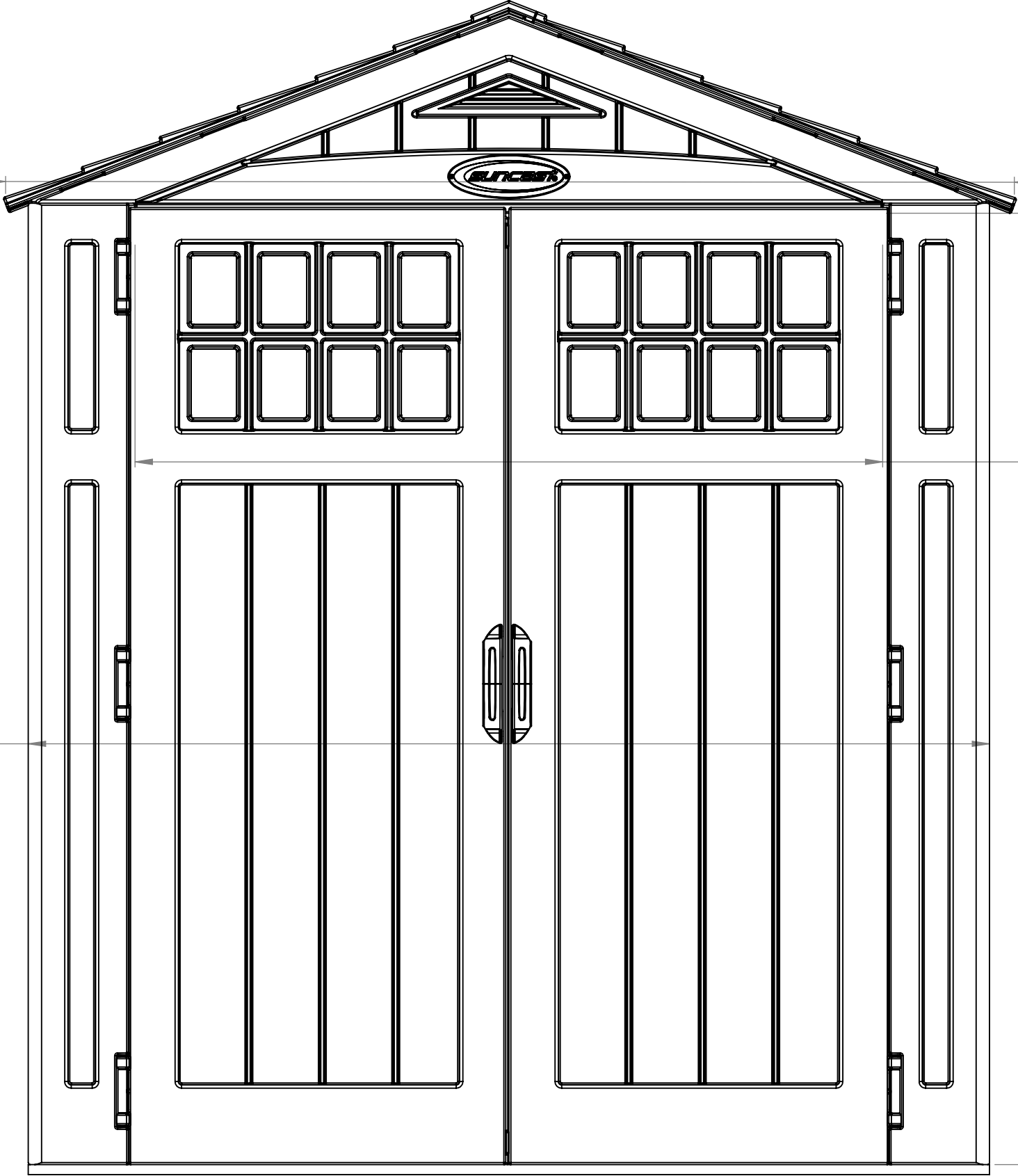
A	XXX	XX/XX/XX	RELEASED FOR QUOTATION	
REV	BY	DATE	DESCRIPTION	
REVISIONS				
MOLD #		NO. OF PARTS: 1000000 REV: 00000000000000000000		 Suncast Corporation 701 North Kirk Road Batavia, IL 60510 USA
MATERIAL		MKM 10/20/10		
		UNLESS OTHERWISE SPECIFIED		
DIMENSIONS ARE IN INCHES				BMS 6 x 8 Platform

BMS 6800 Front

BMS 6800 Front

80"
Exterior
Wall
Width

72"
Exterior
Wall
Width

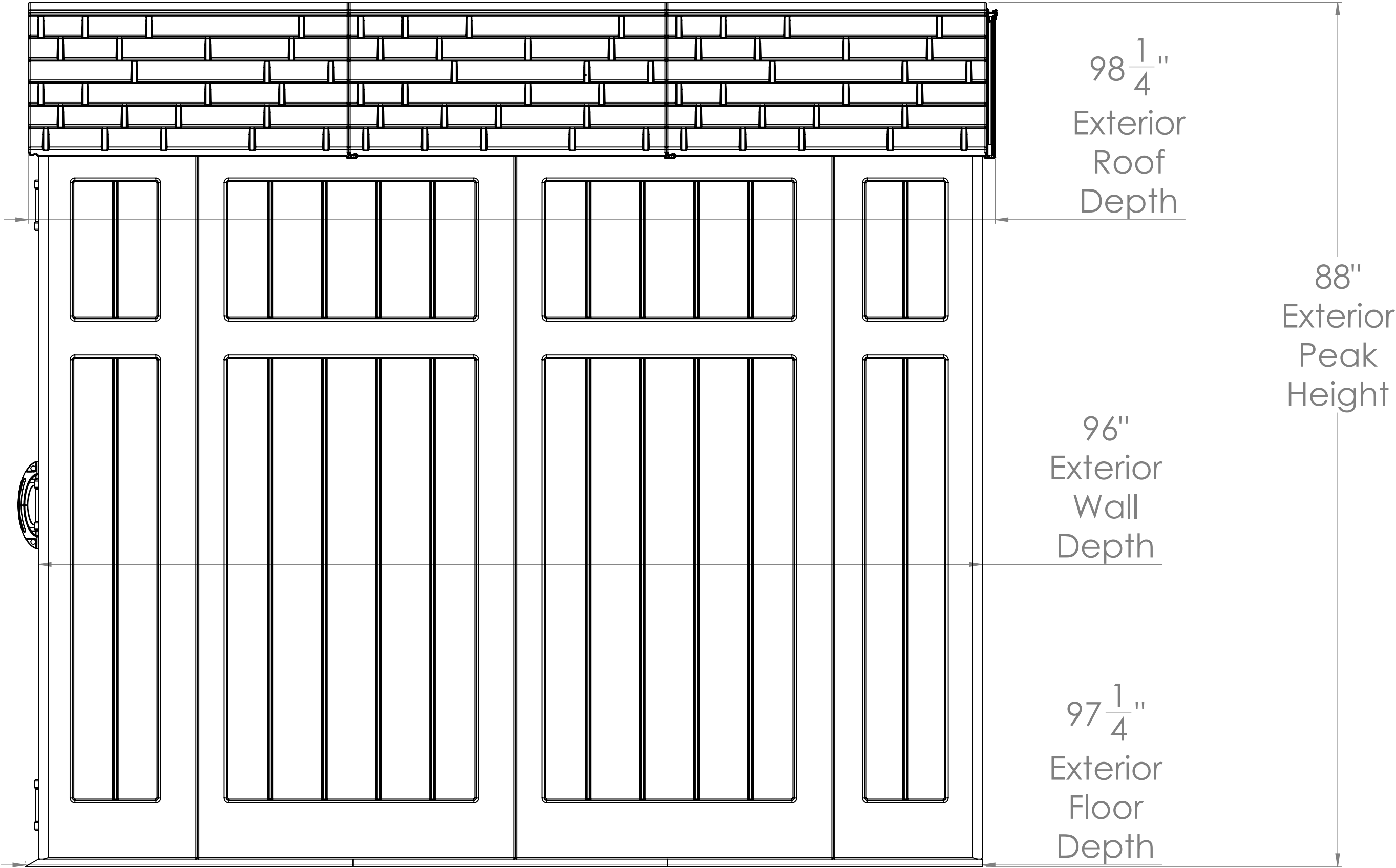


56"
Door
Width

71 ¹/₄"
Door
Height

BMS 6800 Side

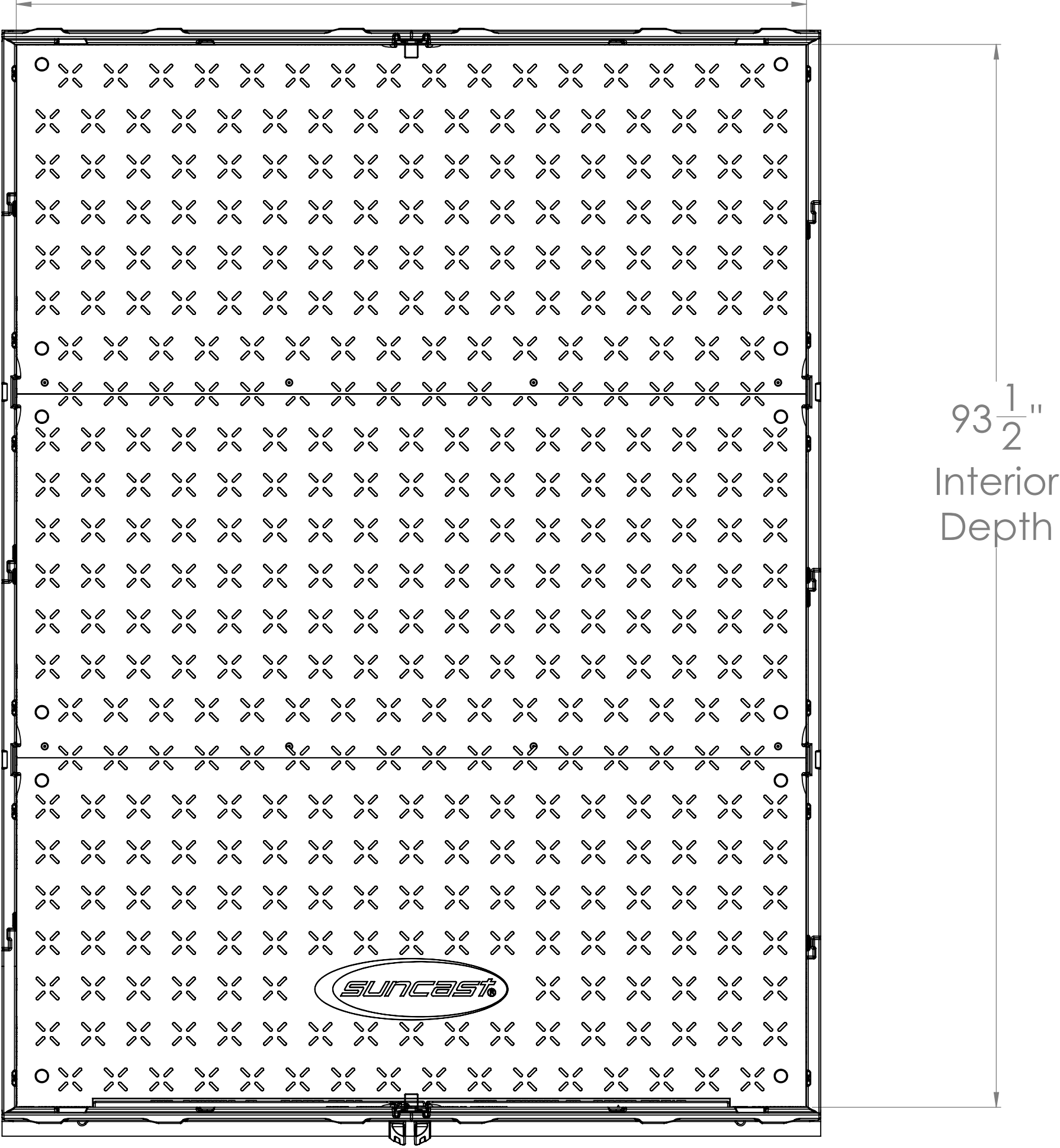
BMS 6800 Side



BMS 6800 Top

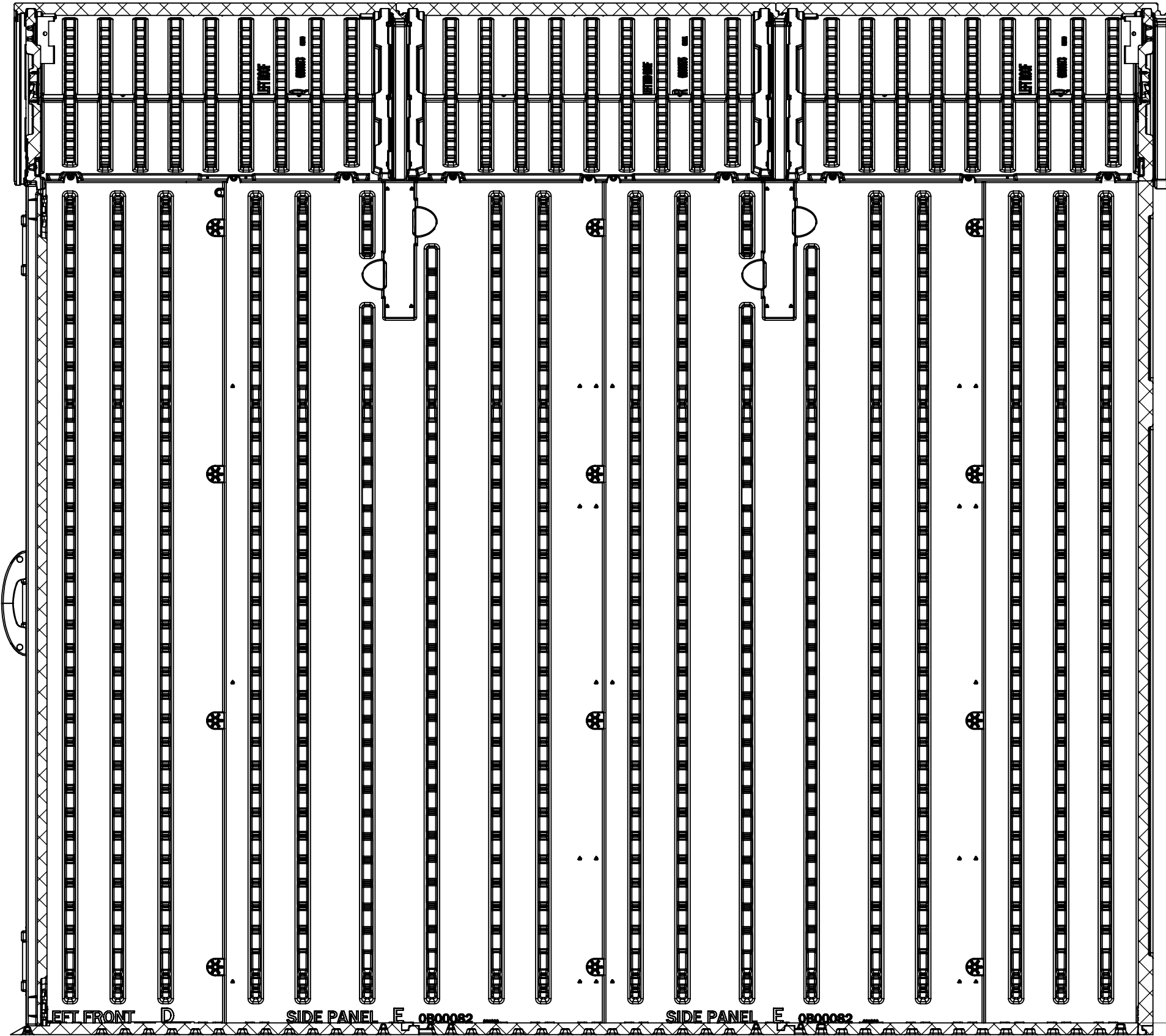
69 1/2" Interior Width

BMS 6800 Top





SECTION A-A
SCALE 1 : 10



85 ³/₄"

Interior
Roof
Peak

71 ³/₄"

Interior
Wall
Height